

**Mouse Srms Antibody (Center)**  
**Purified Rabbit Polyclonal Antibody (Pab)**  
**Catalog # AP21603c****Specification**

---

**Mouse Srms Antibody (Center) - Product Information**

Application	WB,E
Primary Accession	<a href="#">Q62270</a>
Reactivity	Mouse
Host	Rabbit
Clonality	polyclonal
Isotype	Rabbit IgG
Calculated MW	55758
Antigen Region	113-147

**Mouse Srms Antibody (Center) - Additional Information****Other Names**

Tyrosine-protein kinase Srms, PTK70, Srms, Srm

**Target/Specificity**

This Mouse Srms antibody is generated from a rabbit immunized with a KLH conjugated synthetic peptide between 113-147 amino acids from the Central region of Mouse Srms.

**Dilution**

WB~~1:2000

E~~Use at an assay dependent concentration.

**Format**

Purified polyclonal antibody supplied in PBS with 0.09% (W/V) sodium azide. This antibody is purified through a protein A column, followed by peptide affinity purification.

**Storage**

Maintain refrigerated at 2-8°C for up to 2 weeks. For long term storage store at -20°C in small aliquots to prevent freeze-thaw cycles.

**Precautions**

Mouse Srms Antibody (Center) is for research use only and not for use in diagnostic or therapeutic procedures.

**Mouse Srms Antibody (Center) - Protein Information****Name Srms****Synonyms Srm**

**Function** Non-receptor tyrosine-protein kinase which phosphorylates DOK1 on tyrosine residues. Also phosphorylates KHDRBS1/SAM68 and VIM on tyrosine residues. Phosphorylation of KHDRBS1

is EGF-dependent. Phosphorylates OTUB1, promoting deubiquitination of RPTOR.

#### Cellular Location

Cytoplasm {ECO:0000250|UniProtKB:Q9H3Y6}. Note=Localizes to punctate cytoplasmic structures {ECO:0000250|UniProtKB:Q9H3Y6}

#### Tissue Location

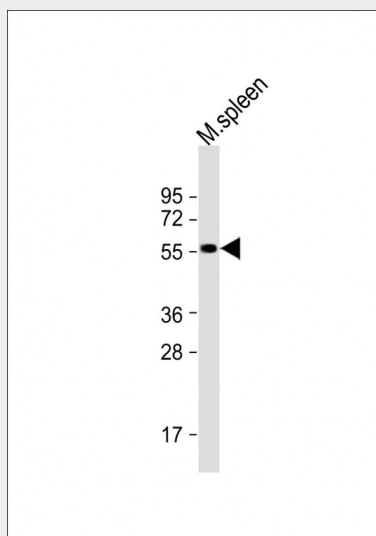
Higher expression in liver, lung, thymus and skin than in brain, kidney, heart and spleen (PubMed:9226137). In skin, highly expressed in keratinocytes (PubMed:9226137). Abundant in lung, liver, spleen, kidney and testis and is also detected in the cerebrum (PubMed:7935409).

### Mouse Srms Antibody (Center) - Protocols

Provided below are standard protocols that you may find useful for product applications.

- [Western Blot](#)
- [Blocking Peptides](#)
- [Dot Blot](#)
- [Immunohistochemistry](#)
- [Immunofluorescence](#)
- [Immunoprecipitation](#)
- [Flow Cytometry](#)
- [Cell Culture](#)

### Mouse Srms Antibody (Center) - Images



Anti-Srms Antibody (Center) at 1:2000 dilution + mouse spleen lysates. Lysates/proteins at 20 µg per lane. Secondary Goat Anti-Rabbit IgG, (H+L), Peroxidase conjugated at 1/10000 dilution. Predicted band size : 56 kDa. Blocking/Dilution buffer: 5% NFDM/TBST.

### Mouse Srms Antibody (Center) - Background

Non-receptor tyrosine-protein kinase which phosphorylates DOK1 on tyrosine residues. May be involved in proliferation or differentiation of keratinocytes in the skin.

### Mouse Srms Antibody (Center) - References

Kawachi Y.,et al.Exp. Dermatol. 6:140-146(1997).  
Kohmura N.,et al.Mol. Cell. Biol. 14:6915-6925(1994).  
Wall M.,et al.Submitted (APR-2001) to the EMBL/GenBank/DDBJ databases.